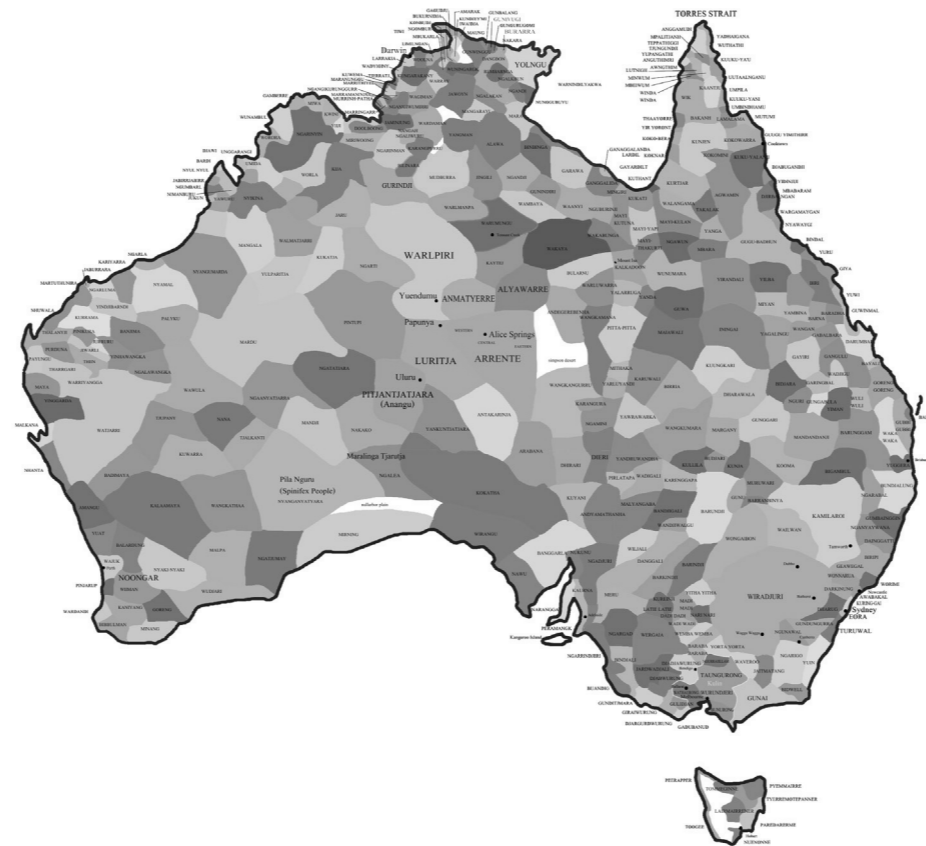


# WARRIEWOOD VALLEY COMMUNITY CENTRE

## DEVELOPMENT APPLICATION - LANDSCAPE





ASPECT Studios acknowledges the traditional owners  
of the land we work on and travel through, and we pay our respects to elders past,  
present and emerging.



**PREPARED BY ASPECT STUDIOS, SYDNEY**

Revision	F
Milestone	Development Application (Landscape)
Date	20.04.2021
Prepared by	K E L
Reviewed by	N B
Contact	Keegan Lovell Senior Landscape Architect
Client	Northern Beaches Council
Lead Consultant	Terroir

Sydney  
Level 1, 78-80 George Street  
Redfern NSW 2016 Australia  
+61 2 9699 7182  
Sydney@aspect-studios.com

# Contents

---

**Section 1    Introduction**

- Background Documents and Guidelines
- Landscape Vision
- Landscape Principles

**Section 2    Landscape Design**

- Landscape Plan and Design Statement
- Detailed Plan - Forest Oasis / Coastal Garden
- Ground Surfaces, Furniture and Fixtures
- Deep Soil Diagram
- Tree Canopy Coverage Diagram

**Section 3    Planting**

- Planting Schedule - Forest Oasis
- Planting Schedules - Coastal Garden
- Planting Schedule - Grassy Swathes
- Planting Schedule - Entry Palms
- Planting Schedule - Boundary Planting
- Planting Schedule - Trellis Planting



## Section 1

# Introduction

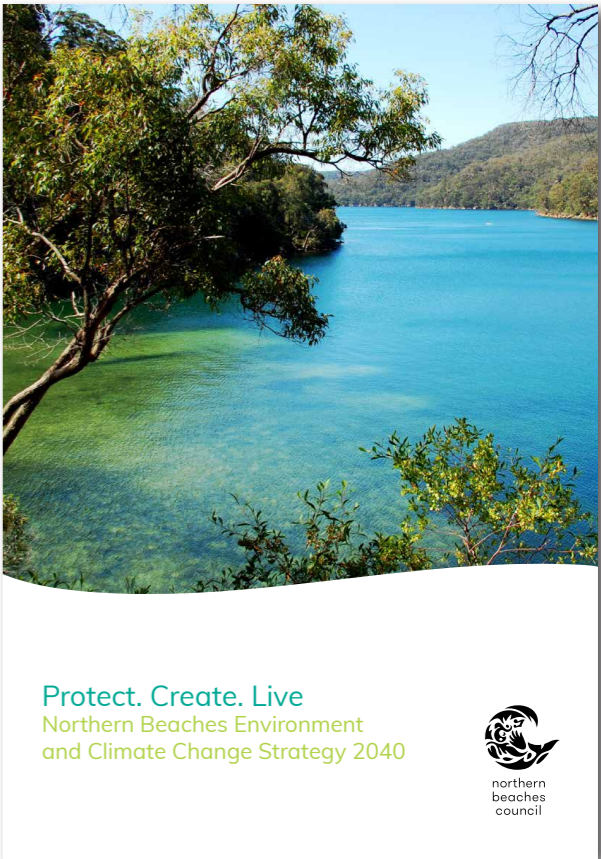
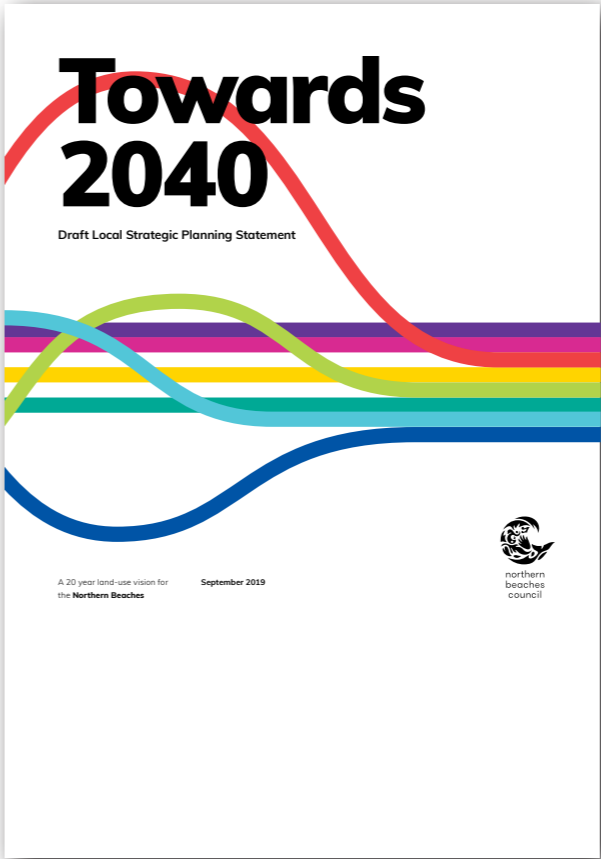
## Background Documents, Vision, and Principles

---

# 1.1 Background Documents and Guidelines

The following are some of the guidelines, strategies & policies that have guided the landscape design (and that will continue to guide the design development moving forward):

- Greener Places Framework & Design Guide (Draft), Government Architect New South Wales
- Toward 2040 Draft Local Strategic Planning Statement (Draft), Northern Beaches Council
- Protect. Create. Live. Northern Beaches Environment and Climate Change Strategy 2040, Northern Beaches Council
- Northern Beaches Council Draft Urban Tree Canopy Plan 2018, Northern Beaches Council
- Shape 2028 Northern Beaches Community Strategic Plan 2018 - 2028, Northern Beaches Council



## 1.2 Landscape Vision

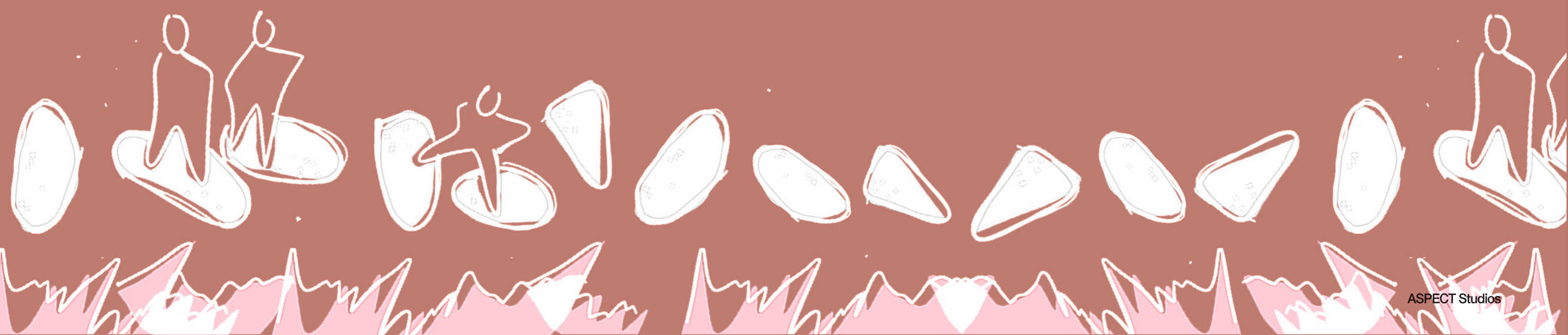
---

The landscape for the Warriewood Valley Community Centre will be a...

# celebration of community and place.

Native and endemic planting will be captivatingly composed to frame the Community Centre, compel engagement with country, and fulfil sustainability best practices.

Small moments of respite will be nestled amongst a rich tapestry of vegetation, and playful discovery paths will weave through coastal planting allowing for incidental play and exploration. It will be a place of, and for, community.



# 1.3 Landscape Principles

Six principles have been established to guide the approach to the design of the landscape. These are as below:

## Only Native Plants

Planting will entirely be made up of native plants to Australia, and endemic planting to the region will also be used (flora found in the coastal landscapes and Sclerophyll forests). This will ensure the landscape is an authentic reflection of place.

## Captivating Planting Composition

The landscape will readily viewed, and framed, from the proposed Community Centre building. A striking planting composition will ensure native planting is celebrated appropriately, and will provide engaging outlooks.

## Embrace Views Beyond

Views to Boondah Reserve to the north are to be maintained. This will be achieved through the use of low-lying coastal planting endemic to the region, and through tall, slender open canopy trees which will provide shade but not obstruct views beyond.

## Indigenous Art / Storytelling

Engaging Indigenous artist/s to embed Indigenous stories on site through art. These are to be integrated within the landscape.

## Quiet Moments of Respite

Nestled amongst the rich tapestry of planting will be small moments of amenity and respite - places to sit and have small gatherings where one can be amongst nature and engage with country.

## A Sense of Discovery

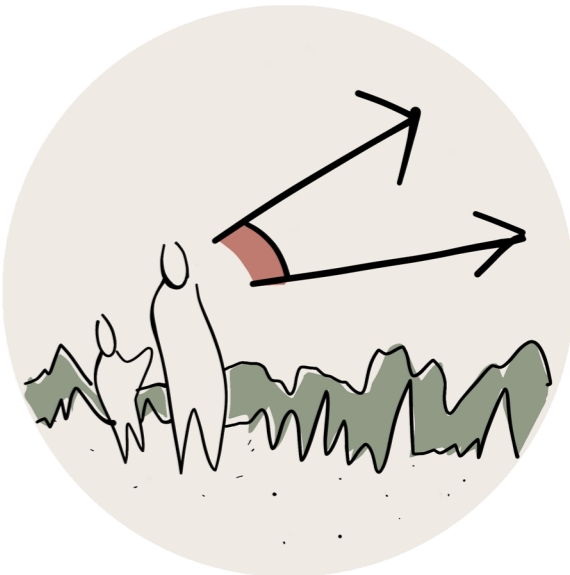
Meandering, and playful, timber and decomposed granite paths through the planting will provide a sense of exploration and incidental play.



ONLY NATIVE PLANTS



CAPTIVATING PLANTING COMPOSITION



EMBRACE VIEWS BEYOND



INDIGENOUS ART / STORYTELLING



QUIET MOMENTS OF RESPITE



A SENSE OF DISCOVERY

# Landscape Design Plans, Diagrams and Design Statement

---



# 2.1 Landscape Plan and Design Statement

The Landscape for the Warriewood Valley Community Centre fully embraces the notion of connecting to nature and place.

A place for the community, the landscape design encourages passive occupation and engagement with native and endemic flora.

In the centre is the forest oasis and coastal garden. Seeking to enhance the community connection with nature, the native planting for this space is to be authentic, striking and bold in composition - harking to the unique rugged qualities of the low-lying coastal heathscapes of the area. Weaving paths of textural decomposed granite and timber steppers provide a sense of play and discovery woven through the space.

The low lying nature of the planting, in combination with feature Eucalyptus trees with high canopies and slender trunks, allows for views out across Boondah reserve to be maintained and enjoyed.

The focal point of this landscape is the oasis garden - a quiet respite surrounded by planting characterised by the local vegetation community of the Swamp Sclerophyll Forest.

On the outer extents of the building, the landscape will be characterised by grassy swathes of native strappy plants. The addition of new planting will build upon the stunning existing character of the native trees and shrubbery in this area.

Entry to the building will be heightened by feature cabbage palms.

Lastly, the site will be framed by a rich tapestry of boundary planting - all native with significant canopy coverage to help reduce the urban heat island effect.

## LEGEND

- 1 The Forest Oasis / Coastal Garden
- 2 Trellis Planting
- 3 Grassy Swathes
- 4 Entry Palms
- 5 Boundary Planting

SCALE 1:500 (A3)  
0 10 20  
5



## 2.2 Landscape Plan - Forest Oasis / Coastal Garden

The Forest Oasis and Coastal Garden is the focal landscape for the Community Centre.

This space is characterised by a rich tapestry of coastal planting - a vegetation typology which is rich in texture, volume and form. Throughout the coastal planting is a series of timber steppers embedded into decomposed granite paths - allowing for a sense of play and discovery to meander through the space for children and adults to enjoy. These paths also contain a series of timber benches for quiet moments of respite and reflection amongst nature.

On the north-east end of the space is an open space with flexible seating to cater for the occasional coffee cart. This space is also adjacent a small timber playspace - raised timber battens that children can play on.

Views out to the garden, and from the garden to the north (Boondah Reserve) and maintained through low lying coastal planting (no higher than 1.2m) and tall, slender trunk trees (such as using *Livistona australis*).

At the core of this space is the oasis garden - a lush, quiet reflective space characterised by vegetation of the Swamp Sclerophyll Forest.

LEGEND

- |    |   |
|----|---|
| 1  | Forest Oasis featuring endemic plant species of the Swamp Sclerophyll Forest. Providing a sheltered space for sitting and resting     |
| 2  | Cabbage Tree Palms  |
| 3  | Coastal Garden providing rich textures and layers of native vegetation of a variety of colours, shapes and forms under 1.2m in height |
| 4  | Flexible seating with umbrellas   |
| 5  | Feature Eucalyptus Trees  |
| 6  | Retained Eucalyptus Tree  |
| 7  | Trellis planting  |
| 8  | Floating timber deck  |
| 9  | Garden style bench seating  |
| 10 | Crushed sandstone informal paths varying in width from 0.9 - 2m   |
| 11 | Raised timber steppers / play elements - inspired by the mouth of the local Spotted Wobbegong   |

SCALE 1:200 (A3)

0 4 8

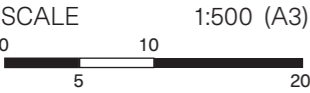
2



2.3 Ground Surfaces, Furniture and Fixtures

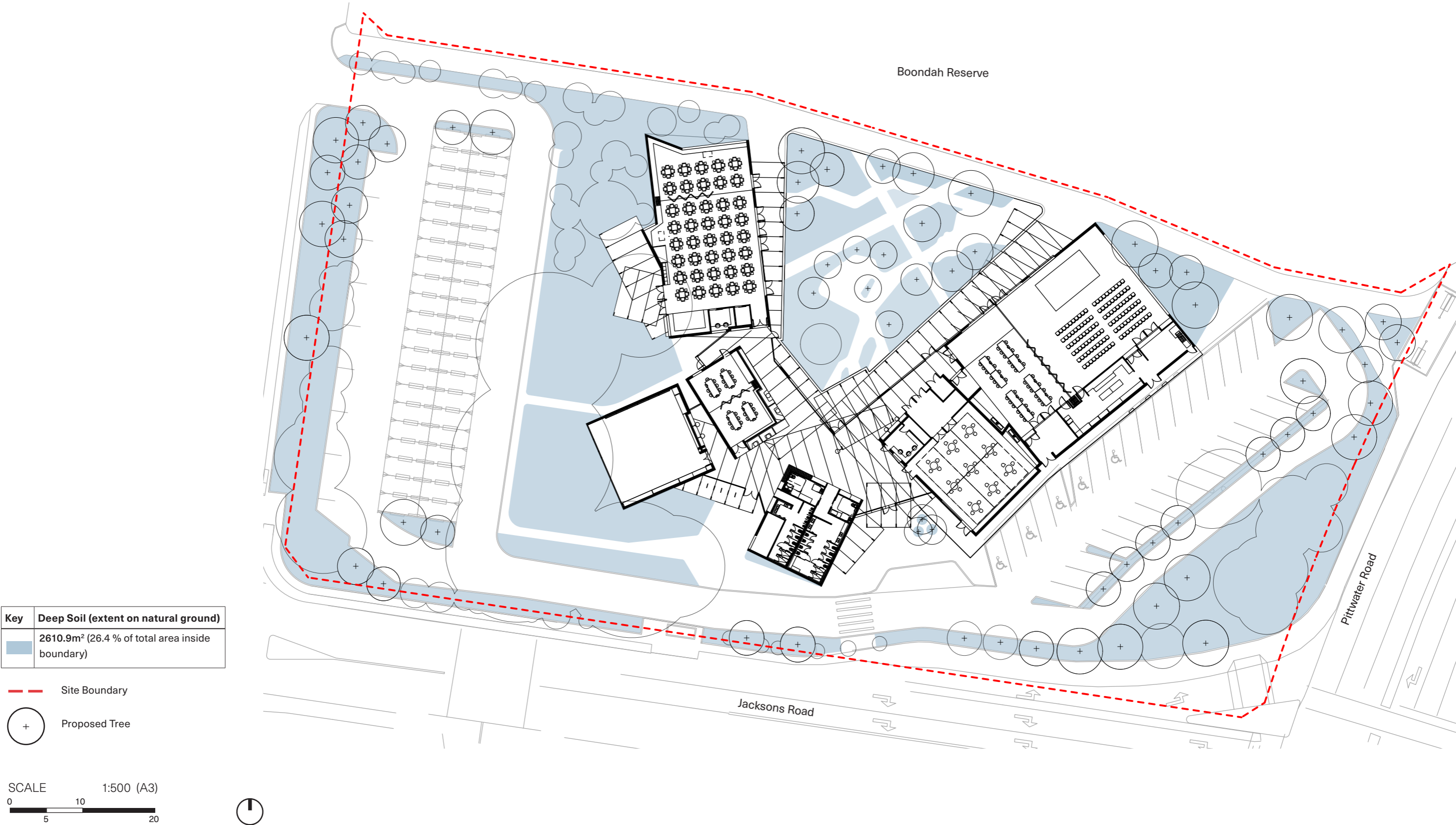


Key	Description
	Deco Granite (DDA compliant)
	Timber Decking
	Raised Timber Platforms
	Timber Garden Benches
	Flexible Furniture



# 2.4 Deep Soil

All proposed Trees are located on natural ground.



# 2.5 Tree Canopy Coverage

Tree and understorey planting throughout the site will provide a rich diversity of native species selected to relate to the range of microclimate conditions across the site, and will provide welcome relief and amenity from hot, exposed conditions.

Within the site boundary, there is a proposed tree canopy coverage of 33.7 percent.

Key	Boundary	Coverage	% of Total Area
<div></div>	Inside	3336 m <sup>2</sup>	33.7%
<div></div>	Outside	222 m <sup>2</sup>	n/a

PROPOSED TREES

Code	Botanical Name	Common Name
BS	<i>Banksia serrata</i>	Old Man Banksia
EH	<i>Eucalyptus haemastoma</i>	Scribbly Gum
EP	<i>Eucalyptus punctata</i>	Grey Gum
LA	<i>Livistona australis</i>	Cabbage Palm
AH	<i>Angophora hispida</i>	Dwarf Apple Gum

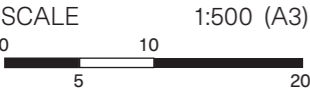
\* For tree removal and protection refer to Arborists report

\* Refer to Planting Schedules for detailed information on proposed species

Site Boundary

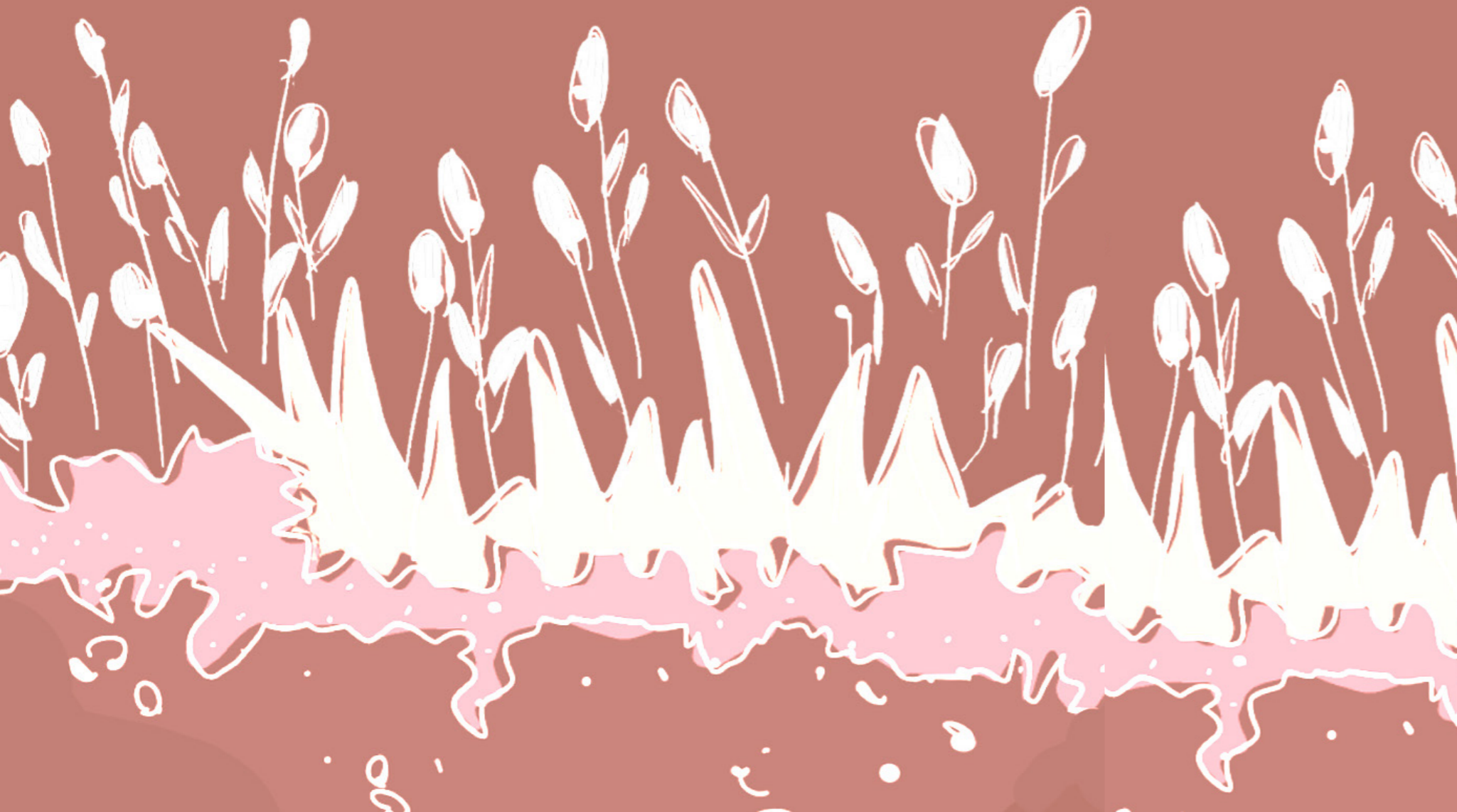
+

Proposed Tree



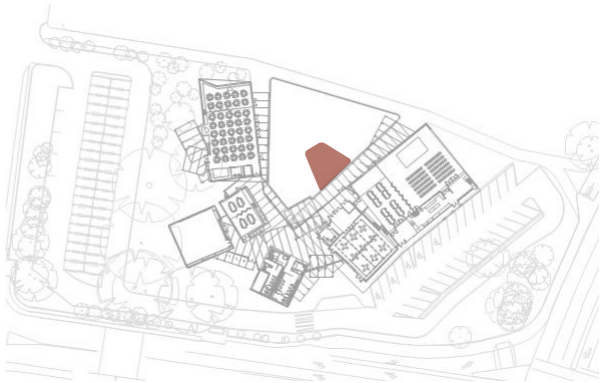
# Planting Strategy Schedules and Selections

---



3.1 Planting - Forest Oasis

- Native and endemic vegetation of the Swamp Sclerophyll Forest found in the region
- Central focal point / moment of respite drawing people in from the building and reserve
- Total area (including existing vegetation) = **113m²**
- Irrigated (to irrigation contractor documentation)



Key Plan

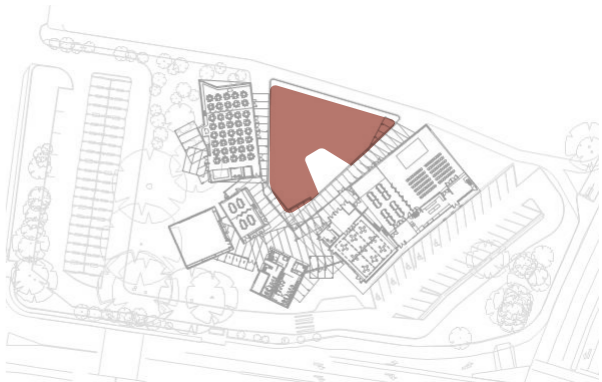
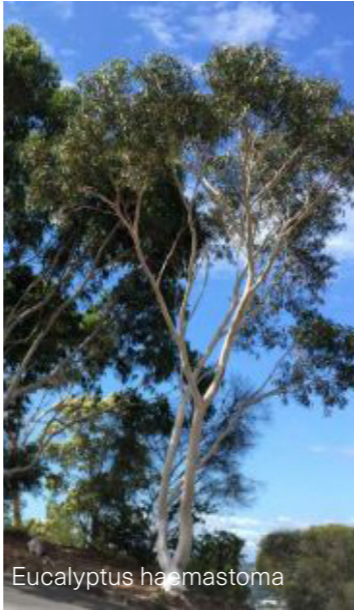
	Proposed Trees					
Endemic Planting	Botanical Name	Common Name	Origin	Mature Size (H X W)m	Pot size (Min)	Quantity
✓	<i>Livistona australis</i>	Cabbage Tree Palm	Native	15 X 6	200L	7

	Shrubs / Groundcovers					
Endemic Planting	Botanical Name	Common Name	Origin	Mature Size (H X W)m	Pot size (Min)	Density/m²
	<i>Asplenium australasicum</i>	Birds Nest Fern	Native	1.2 X 1.2	300mm	4
✓	<i>Adiantum aethiopicum</i>	Common Maidenhair	Native	0.3 X 0.5	200mm	6
✓	<i>Blechnum indicum</i>	Swamp Water Fern	Native	0.3 X 1.0	200mm	6
✓	<i>Dianella caerulea</i>	Blue Flax Lily	Native	0.5 X 1.0	200mm	6
✓	<i>Dichondra repens</i>	Kidney Weed	Native	0.2 X 0.6	200mm	6
	<i>Helmholtzia glaberrima</i>	Stream Lily	Native	1.0 X 1.2	300mm	4
✓	<i>Imperata cylindrica</i>	Cogon Grass	Native	0.6 X 0.6	200mm	6
✓	<i>Viola hederacea</i>	Native Violet	Native	0.2 X 0.5	200mm	6

\* Quantities of understorey plant species will be provided for Construction Certificate

3.2 Planting - Coastal Garden

- Rich textures and layers of native vegetation of a variety of colours, shapes and forms
- Native and endemic coastal vegetation (max 1.2m height)
- Total area (including existing vegetation) = **354m<sup>2</sup>**
- Irrigated (to irrigation contractor documentation)



Key Plan



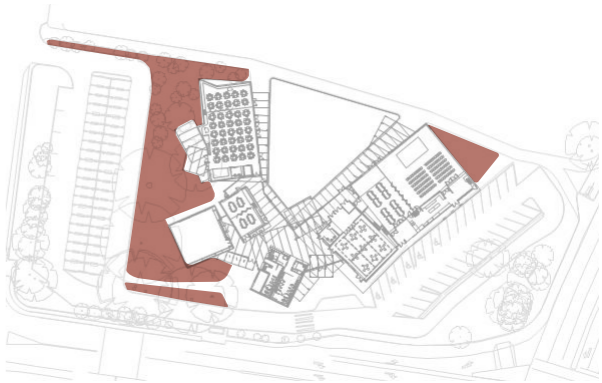
	Proposed Trees					
Endemic Planting	Botanical Name	Common Name	Origin	Mature Size (H X W)m	Pot size (Min)	Quantity
✓	<i>Eucalyptus haemastoma</i>	Scribbly Gum	Native	15 X 5	200L	10

	Shrubs / Groundcovers					
Endemic Planting	Botanical Name	Common Name	Origin	Mature Size (H X W)m	Pot size (Min)	Density/ m <sup>2</sup>
✓	<i>Actinotus helianthi</i>	Flannel Flower	Native	0.5 X 0.8	200mm	6
	<i>Banksia 'Birthday Candles'</i>	Birthday Candles	Native	0.4 X 1.0	300mm	4
✓	<i>Carpobrotus glaucescens</i>	Pig face	Native	0.3 X 1.2	200mm	6
✓	<i>Dichondra repens</i>	Kidney Weed	Native	0.2 X 0.6	200mm	6
	<i>Grevillea 'Gin Gin Gem'</i>	Gin Gin Gem	Native	0.5 X 0.5	200mm	6
✓	<i>Hardenbergia violacea</i>	Purple Coral Pea	Native	0.6 X 0.7	200mm	6
✓	<i>Hibbertia scandens</i>	Golden Guinea Flower	Native	0.5 X 0.8	200mm	6
✓	<i>Imperata cylindrica</i>	Blady Grass	Native	0.6 X 0.8	200mm	6
✓	<i>Kennedia rubicunda</i>	Dusky Coral Pea	Native	0.3 X 1.0	200mm	6
✓	<i>Lomandra longifolia</i>	Spiny-headed Mat-rush	Native	1.2 X 0.7	200mm	6
	<i>Lomandra 'Little Con'</i>	Little Con	Native	0.3 X 0.5	200mm	6
	<i>Russelia equisetiformis</i>	Firecracker	Native	1.0 X 1.5	200mm	6
✓	<i>Xanthorrhoea resinifera</i>	Grass Tree	Native	1.2 X 1.5	300mm	4
✓	<i>Westringia fruticosa</i>	Coast Rosemary	Native	1.2 X 1.5	300mm	4

\* Quantities of understorey plant species will be provided for Construction Certificate

### 3.3 Grassy Swathes

- Reinforce existing trees (Eucalyptus - refer to Arborists report.) with lush understorey of native grasses
- Total area (including existing vegetation) = **1126m²**
- Irrigated (to irrigation contractor documentation)



Key Plan

	Proposed Trees					
Endemic Planting	Botanical Name	Common Name	Origin	Mature Size (H X W)m	Pot size (Min)	Quantity
✓	<i>Eucalyptus punctata</i>	Grey Gum	Native	15 X 5	200L	4

	Shrubs / Groundcovers					
Endemic Planting	Botanical Name	Common Name	Origin	Mature Size (H X W)m	Pot size (Min)	Density/m²
✓	<i>Carex longebrachiata</i>	Australian Sedge	Native	0.8 X 0.6	200mm	6
✓	<i>Imperata cylindrica</i>	Cogon Grass	Native	0.6 X 0.6	200mm	6
✓	<i>Themeda australis</i>	Kangaroo Grass	Native	0.5 X 0.6	200mm	6

\* Quantities of understorey plant species will be provided for Construction Certificate

### 3.4 Entry Palms

- Focal point for entering the Community Centre
- Statement palms of the Swamp Sclerophyll Forest with low groundcovers (tolerant of shady southern aspect)
- Total area (including existing vegetation) = **8m²**
- Irrigated (to irrigation contractor documentation)



Key Plan

	Proposed Trees					
Endemic Planting	Botanical Name	Common Name	Origin	Mature Size (H X W)m	Pot size (Min)	Quantity
✓	<i>Livistona australis</i>	Cabbage Tree Palm	Native	15 X 6	200L	3

	Shrubs / Groundcovers					
Endemic Planting	Botanical Name	Common Name	Origin	Mature Size (H X W)m	Pot size (Min)	Density/m²
✓	<i>Dichondra repens</i>	Kidney Weed	Native	0.2 X 0.6	200mm	6
✓	<i>Themeda australis</i>	Kangaroo Grass	Native	0.5 X 0.6	200mm	6

\* Quantities of understorey plant species will be provided for Construction Certificate

3.5 Boundary Planting

- Landscape buffer between road and site with additional street / carpark trees to reduce urban heat island effect
- Total area (including existing vegetation) = **1373m²**
- Irrigated (to irrigation contractor documentation)



Key Plan

	Trees					
Endemic Planting	Botanical Name	Common Name	Origin	Mature Size (H X W)m	Pot size (Min)	Quantity
✓	Angophora hispida	Dwarf Apple Gum	Native	7 X 3	200L	15
✓	Banksia serrata	Old Man Banksia	Native	8 X 4	200L	24

	Shrubs / Groundcovers					
Endemic Planting	Botanical Name	Common Name	Origin	Mature Size (H X W)m	Pot size (Min)	Density/m²
✓	Grevillea buxifolia	White Spider Flower	Native	0.9 X 0.8	200mm	6
	Lomandra 'Little Con'	Mat Rush	Native	0.6 X 0.7	200mm	6
✓	Imperata cylindrica	Blady Grass	Native	0.6 X 0.8	200mm	6

\* Quantities of understorey plant species will be provided for Construction Certificate

### 3.6 Trellis Planting

- Climbers trained to stainless steel cables to grow up the awning posts and frame garden views
- Native flowering species for pollinators
- Irrigated (to irrigation contractor documentation)



Key Plan



Pandorea pandorana



Kennedia rubicunda

	Climbers					
Endemic Planting	Botanical Name	Common Name	Origin	Mature Size (H X W)m	Pot size (Min)	Density/m²
✓	<i>Kennedia rubicunda</i>	Dusky Coral Pea	Native	1.0 X 3.0	200mm	n/a
	<i>Pandorea pandorana</i>	Wonga Wonga Vine	Native	1.0 X 3.0	200mm	n/a

\* Quantities of understorey plant species will be provided for Construction Certificate

